





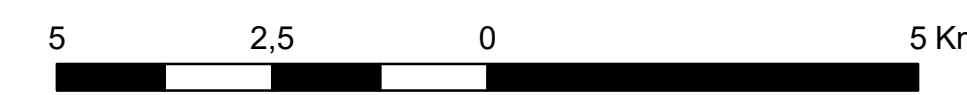
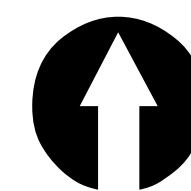
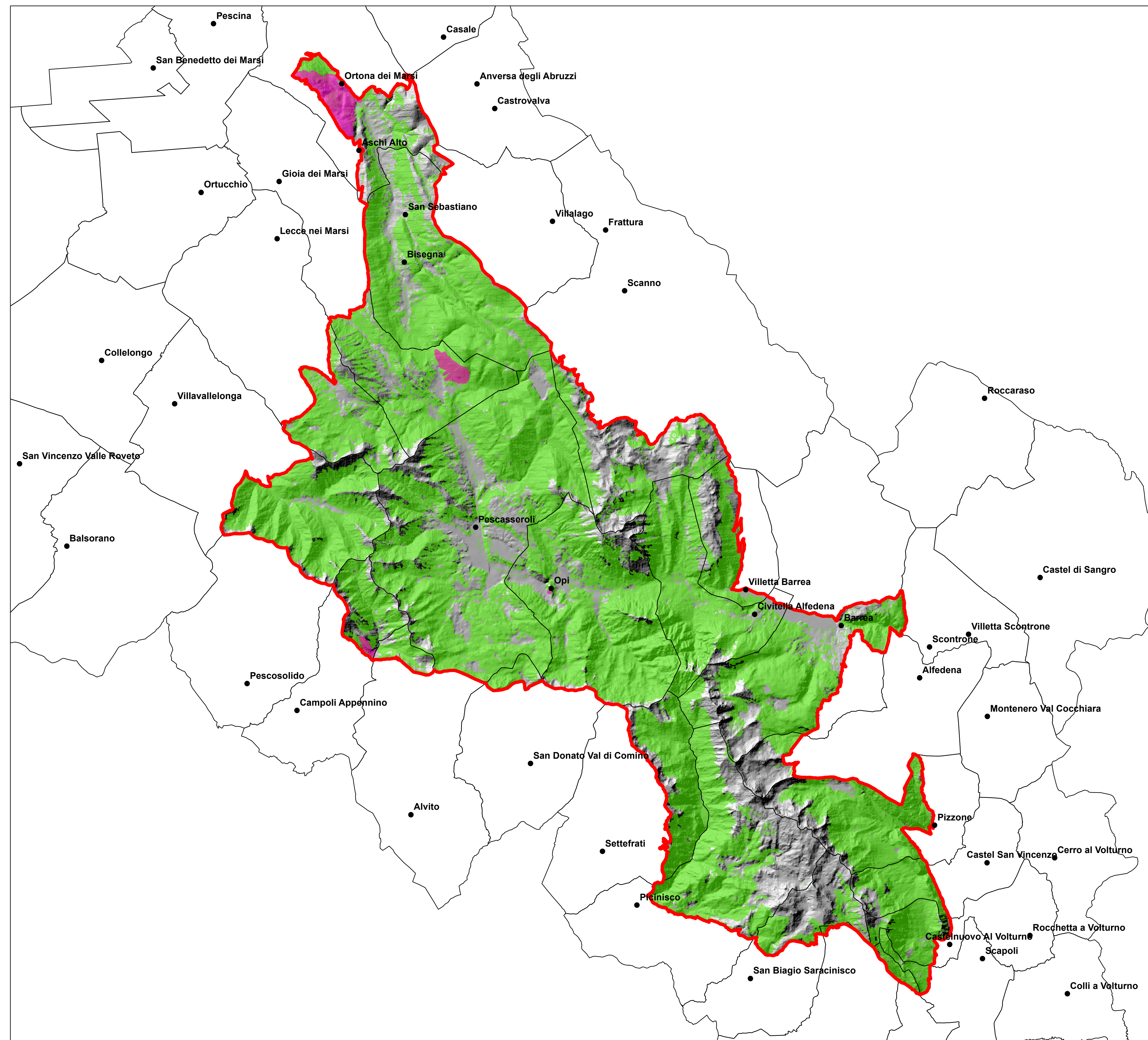


**Parco Nazionale d'Abruzzo, Lazio e Molise**  
Piano di previsione, prevenzione e lotta attiva contro  
gli incendi boschivi  
Periodo di validità 2017-2021 (L. 353/2000)

**CARTA DELLE SUPERFICI  
INCENDIATE NEGLI ULTIMI  
10 ANNI**

**LEGENDA**

-  Incendi ultimi 10 anni
-  Foreste
-  Confini PNALM dal Piano del Parco
-  Limiti Comunali



Sistema di Proiezione UTM Fuso 33 - Datum WGS84



Laboratorio Natural Resources & Environmental Planning  
Università degli Studi del Molise  
[www.ecogeofor.unimol.it](http://www.ecogeofor.unimol.it)

